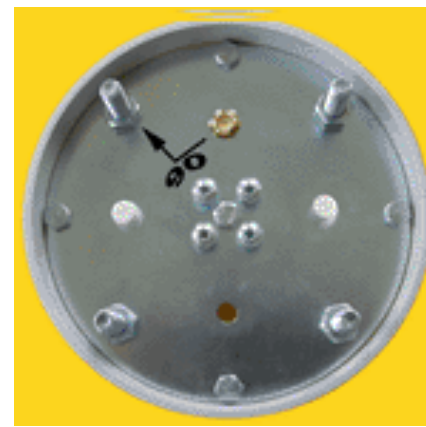
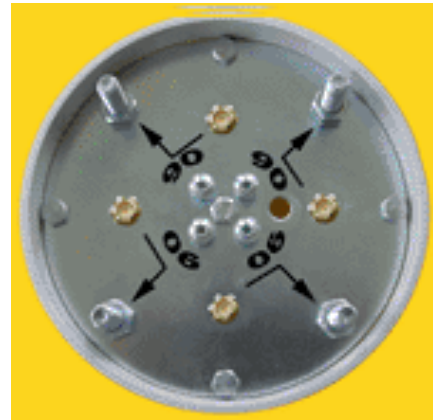


DAWICOM WiFi antennas 5.470-5.725 GHz

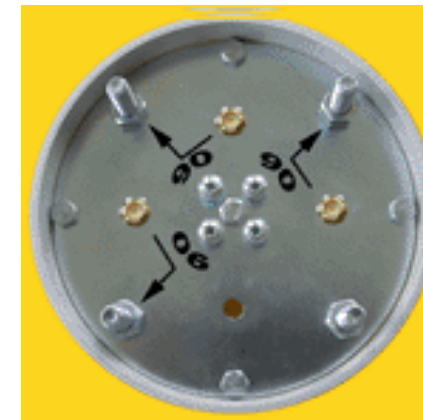
DSM16-90/ 4a - 4 Sector antennas
with H polarization 4 x 90° (4 x 15.5 dBi)

Gain: 4x15.5 dBi
Beamwidth (E-plane @-6dB): 4x90°
Polarization: Horizontal
VSWR: 1.4:1
Impedance: 50 Ohms
Band: 5470-5725 MHz
Termination: 4x RSMA (jack)
Power: 2 Watts
Dimension: 110x380 mm
Weight: 1.8 kg



DSM16-90/ 1a - Sector antenna
with H polarization 1 x 90° (15.5 dBi)

Gain: 15.5 dBi
Beamwidth (E-plane @-6dB): 1x90°
Polarization: Horizontal
VSWR: 1.4:1
Impedance: 50 Ohms
Band: 5470-5725 MHz
Termination: RSMA (jack)
Power: 2 Watts
Dimension: 110x380 mm
Weight: 1.1 kg



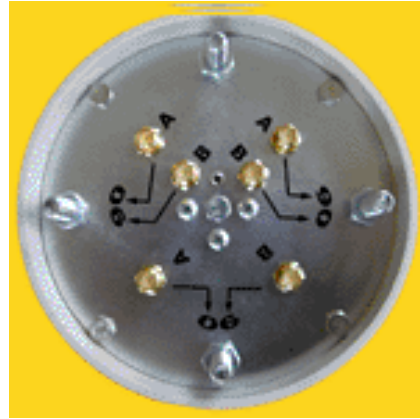
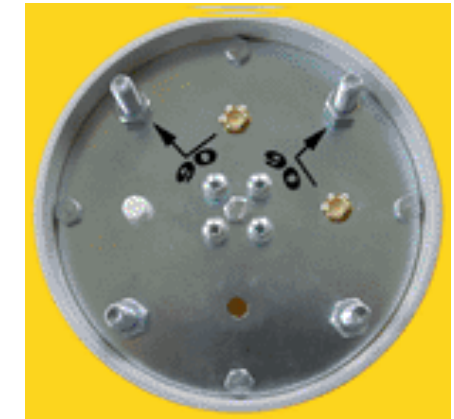
DSM16-90/ 2Aa - 2 Sector antennas
with H polarization 2 x 90° (2 x 15.5 dBi)

Gain: 2x15.5 dBi
Beamwidth (E-plane @-6dB): 2x90°
Polarization: Horizontal
VSWR: 1.4:1
Impedance: 50 Ohms
Band: 5470-5725 MHz
Termination: 2x RSMA (jack)
Power: 2 Watts
Dimension: 110x380 mm
Weight: 1.3 kg

DAWICOM WLAN products

DSM16-90/ 3a - 3 Sector antennas
with H polarization 3 x 90° (3 x 15.5 dBi)

Gain: 3x15.5 dBi
Beamwidth (E-plane @-6dB): 3x90°
Polarization: Horizontal
VSWR: 1.4:1
Impedance: 50 Ohms
Band: 5470-5725 MHz
Termination: 3x RSMA (jack)
Power: 2 Watts
Dimension: 110x380 mm
Weight: 1.5 kg



DSM16-90/ 6a - 6 Sector antennas
with H polarization 6 x 90° (6x15.5 dBi)

Gain: 6x15.5 dBi
Beamwidth (E-plane @-6dB): 6x90°
Polarization: Horizontal
VSWR: 1.4:1
Impedance: 50 Ohms
Band: 5470-5725 MHz
Termination: 6x RSMA (jack)
Power: 2 Watts
Dimension: 110x680 mm
Weight: 3.3 kg



DSM13-180/ 2a - 2 Sector antennas
with H polarization 2x180° (2x12.5 dBi)

Gain: 2x12.5 dBi
Beamwidth (E-plane @-6dB): 2x180°
Polarization: Horizontal
VSWR: 1.4:1
Impedance: 50 Ohms
Band: 5470-5725 MHz
Termination: 2x RSMA (jack)
Power: 2 Watts
Dimension: 110x380 mm
Weight: 1.8 kg

Universal model
of radome for DSM and DVM

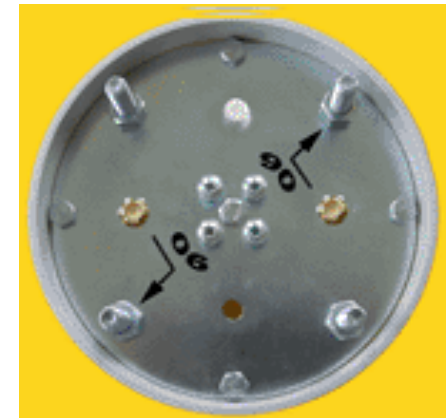


Mounting bracket
for antennas DSM and DVM



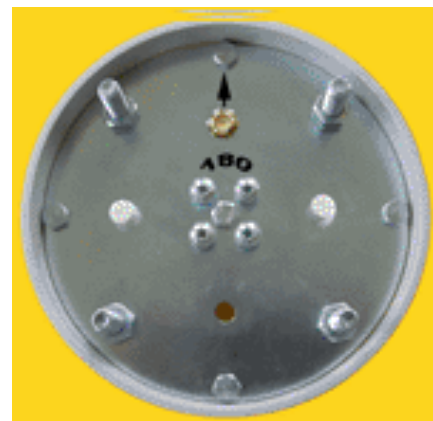
DSM16-90/ 2Ba - 2 Sector antennas
with H polarization 2 x 90° (2 x 15.5 dBi)

Gain: 2x15.5 dBi
Beamwidth (E-plane @-6dB): 2x90°
Polarization: Horizontal
VSWR: 1.4:1
Impedance: 50 Ohms
Band: 5470-5725 MHz
Termination: 2x RSMA (jack)
Power: 2 Watts
Dimension: 110x380 mm
Weight: 1.3 kg



DSM13-180/ 1a - Sector antenna
with H polarization 1 x 180° (12.5 dBi)

Gain: 12.5 dB
Beamwidth (E-plane @-6dB): 1x180°
Polarization: Horizontal
VSWR: 1.4:1
Impedance: 50 Ohms
Band: 5470-5725 MHz
Termination: RSMA (jack)
Power: 2 Watts
Dimension: 110x380 mm
Weight: 1.3 kg



PA12 - Sector inner patch antenna
with H/ V polarization

Gain: 12 dBi
Beamwidth (E-plane @-3dB): 55°
Polarization: H/ V
VSWR: 1.5:1
Impedance: 50 Ohms
Band: 5470-5725 MHz
Termination: RSMA (jack)
Power: 10 Watts
Dimension: 140x45 mm
Weight: 370 g



PA10 - Sector inner patch antenna
with H/ V polarization

Gain: 10 dBi
Beamwidth (E-plane @-3dB): 70°
Polarization: H/ V
VSWR: 1.5:1
Impedance: 50 Ohms
Band: 5470-5725 MHz
Termination: RSMA (jack)
Power: 10 Watts
Dimension: 105x45 mm
Weight: 250 g



DVM10a - Omni-directional antenna
with H polarization (10 dBi)

Gain: 10 dBi
Beamwidth (E-plane @-6dB): 360°
Polarization: Horizontal
VSWR: 1.4:1
Impedance: 50 Ohms
Band: 5470-5725 MHz
Termination: RSMA (jack)
Power: 2 Watts
Dimension: 110 x 380 mm
Weight: 1.8 kg